



# vetro

CANARY WHARF  
LONDON

THE PENTHOUSES

*Beautiful Apartments  
Spectacular Views*



J

Just minutes from Canary Wharf, Vetro's stunning two bedroom duplex penthouses provide some of London's most spectacular views of the River Thames. The finest materials and finishes combine with exquisite craftsmanship to deliver spacious open-plan layouts for the very best of lifestyles. Close to the shopping, restaurants and bustling heart of Canary Wharf, and just yards from Westferry station, connectivity with all of the Capital is simple: perfect for work, for study or merely for pleasure.

*Vetro is a rare limited edition of beautifully crafted and considered homes.*

“Elegant  
elevated living,  
stunning  
views.”

Panoramas of the River Thames,  
the City and beyond.



A computer generated image of Vetro's penthouses with the towers of Canary Wharf behind.



VETRO LONDON





# “A delicate and reflective silhouette on the skyline.”

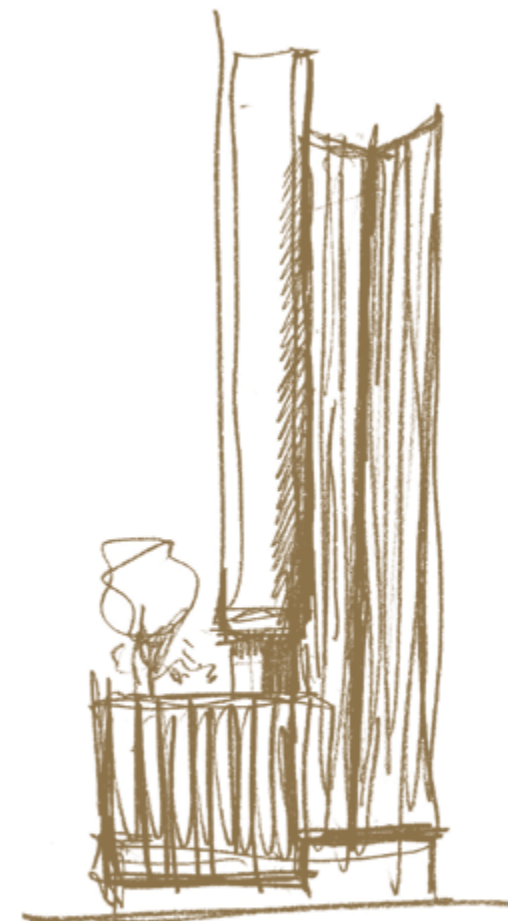
IAN SIMPSON  
SimpsonHaugh



**Founding partner of Vetro architects SimpsonHaugh, Ian Simpson describes the building's design as a tale of two halves, the 'podium' and the 'spire'.**

The materiality of the building transitions from traditional brick to a slender vertical component of shimmering glass. Connected by a shared garden on the seventh floor that invites all residents from above and below, the two distinctive parts to the building are direct responses to their immediate context. The lower 'podium' levels are locked into their urban setting whilst the tower is designed to maximise reflection and the light of the sky. Comfort can be drawn from the familiarity of the textured grain whilst from a distance the glazing of the 'spire' intends to minimise interruption by mirroring the day that surrounds it.

“To complement the skyline, we've introduced increasingly wide, highly reflective reveals to the upper levels so that the building captures the light and is constantly changing. We didn't want to create something that absorbed the light but rather played with it, reflecting the time of day and all the seasons. We believe it's this interaction that truly brings the building to life.”







**PODIUM GARDEN**

Immaculately landscaped, residents will be able to enjoy views and tranquillity whilst having an outdoor space to relax.





**LOBBY**  
Warm tones and complementary textures create a striking sense of arrival.



Satiating the desire for wellness in the capital, Vetro offers a portfolio of amenities that grants new heights of healthy-living to its residents and guests. Not only do the impressive podium gardens, stretching out above the city, offer outdoor space and fresh air amid glorious views, the in-house gym provides a professional fitness arena in which to exercise, strengthen and tone. Complemented by a sauna, luxurious shower and relaxation area, the facilities here verge on those of a London spa. A concierge service will welcome all guests at the immaculately designed lobby whilst being on hand to make residents' lives run smoothly.





VETRO LONDON



SUMPTUOUS AND  
SOPHISTICATED HOMES







The creation of Vetro is a truly purposeful one. "This is a building which shares the strong ambition and grander vision of Canary Wharf, and represents a real opportunity to reflect those aspirations, values, qualities and activities at this gateway point just north of the DLR" states Rachel Haugh.

Bringing her signature style to the interiors at Vetro, Sanna Wennberg, adds "Inspired by the local maritime history, each feature of the penthouse apartments has been embellished to upgrade the experience further. Floors match the kitchen's dark timber joinery, combined with opulent marble finish worktops and island to create an overall luxurious aesthetic. The impressive master bathroom in the en-suite bedroom boasts the art of book-matched marble finishes above the full-sized built-in bathtub and enjoys the privacy of an enclosed recessed WC. With stunning clean lines, rich materials, considered lighting and hints of the harbour legacy that surrounds them, each apartment enjoys uninterrupted views and is a true example of expert craftsmanship."

**Rachel Haugh, half of the founding duo at SimpsonHaugh, explains how Vetro will become a significant marker for East London.**

“Representing historic adventure and spirit.”





**LIVING & DINING**  
Exquisite oak floors stretch across the open-plan room to offer beautifully functional yet luxurious rooms with breathtaking views. Each apartment is a true and lasting example of expert craftsmanship.





**CLASSIC KITCHEN OPTION**

Carefully selected finishes range from warm dark timber joinery to opulent marble finish counter tops detailed with modern brassware fittings to create a refined style with understated glamour.





**BEDROOM**  
Magnificent views of the River Thames, The City and beyond create a dramatic impression, with natural light flooding through expansive windows for a calm and timeless backdrop.



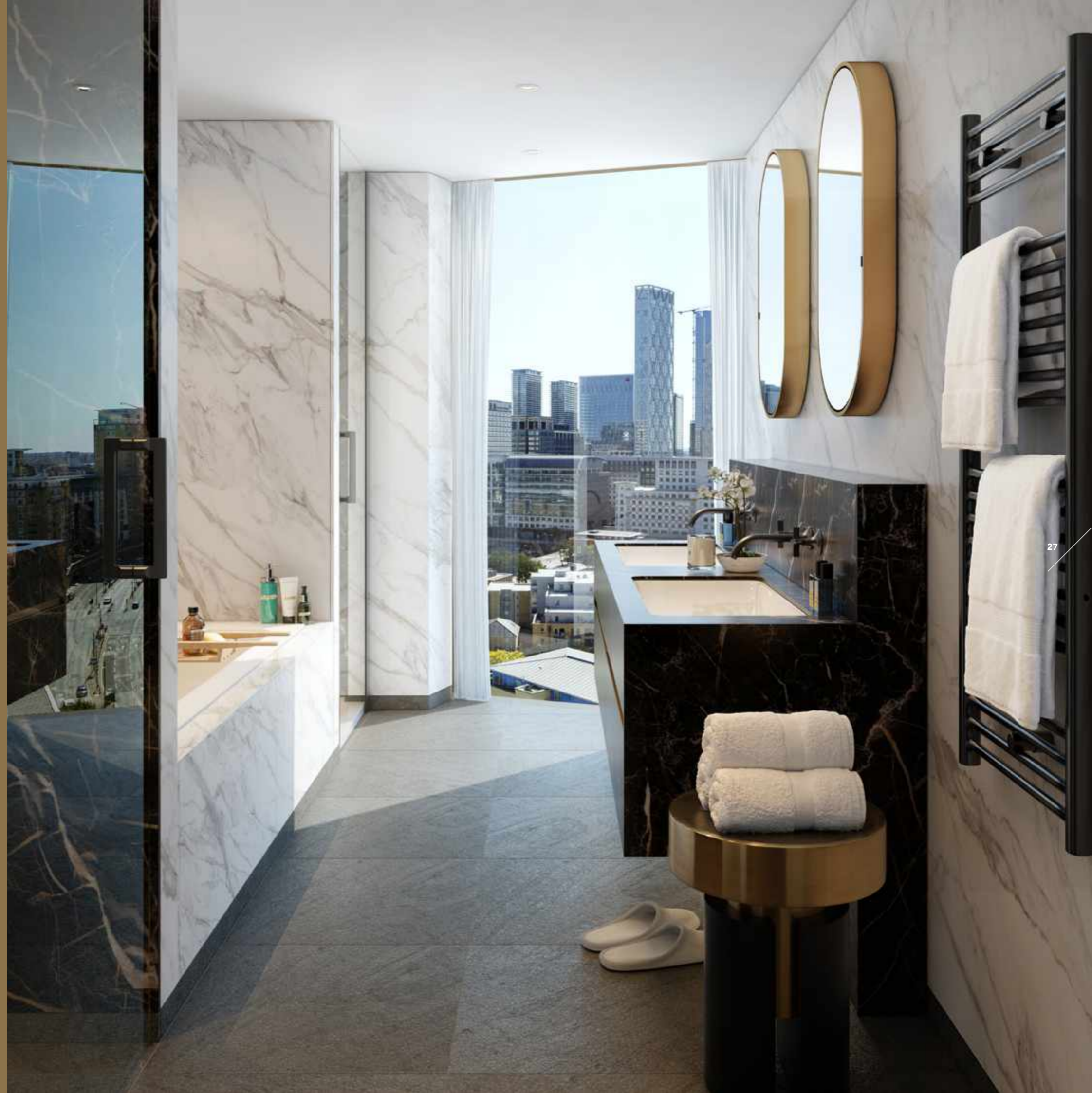


**WARDROBE**  
Each feature of the penthouse apartment is embellished to upgrade the experience further, including crafted, premium fitted wardrobes with clean lines to maximise storage space with style.



**BATHROOM**

Marble finish stoneware with exquisite brassware adorn the principle bathroom, complete with a full-sized built-in bathtub, stunning shower with views and the privacy of an enclosed recessed WC.





**The finest dark timbers, marble finishes, rich textures, and well-considered materials make Vetro's penthouses some of the very best-in-class.**

The penthouses have been immaculately space planned to optimise the extraordinary views down the river and across the Capital. Each apartment is superbly specified, with the well-equipped and styled kitchens available in both classic and contemporary finishes. The principal bathrooms are in sophisticated neutral tone marble finish, combined with brassware for an elegant yet timeless style. Every detail has been a journey in pursuit of excellence, these are truly rare homes of exquisite quality.





“Exquisite textures married to intelligent design.”

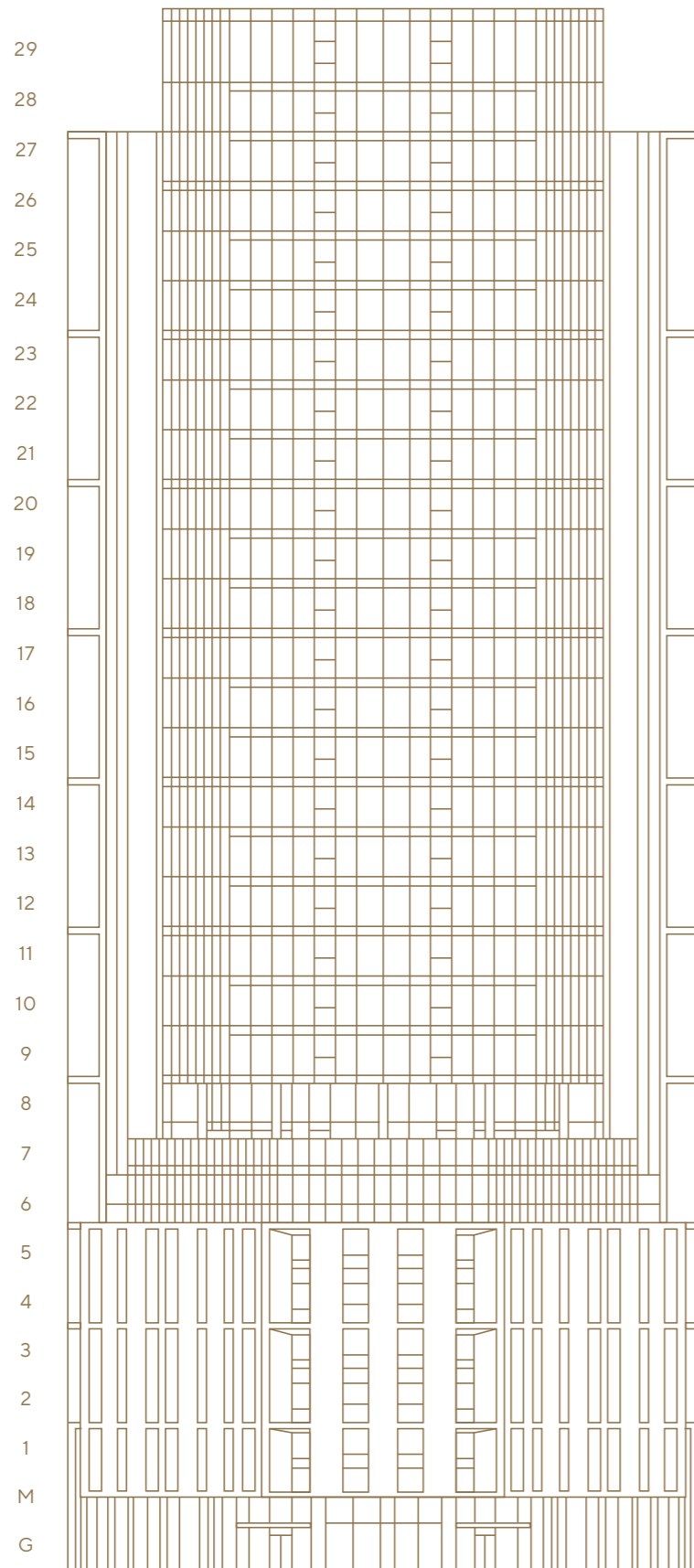
**CONTEMPORARY KITCHEN OPTION**

Beautifully crafted island high table with dramatic grey veined white marbled back counter worktop and splashback, white handleless cupboard doors and full height black oak veneered doors combine to create an elegant design.









**24 – 29** 2 Bed Penthouses

**9 – 23** 2 Bed Apartments

**8** Gym & Sauna

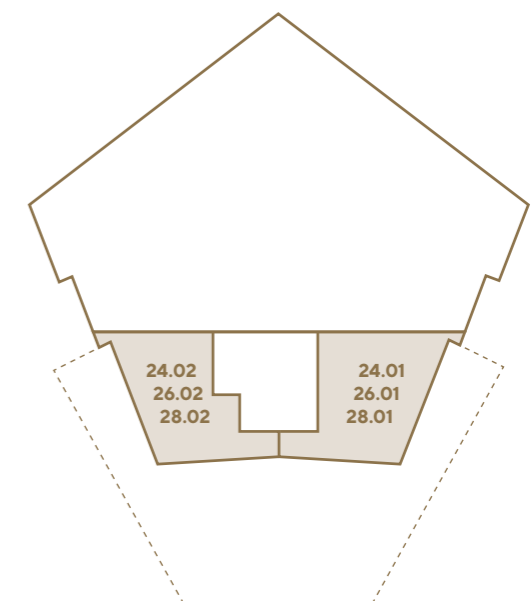
**7** Podium Garden

**6** 1&2 Bed Apartments

**5** 1&2 Bed Apartments

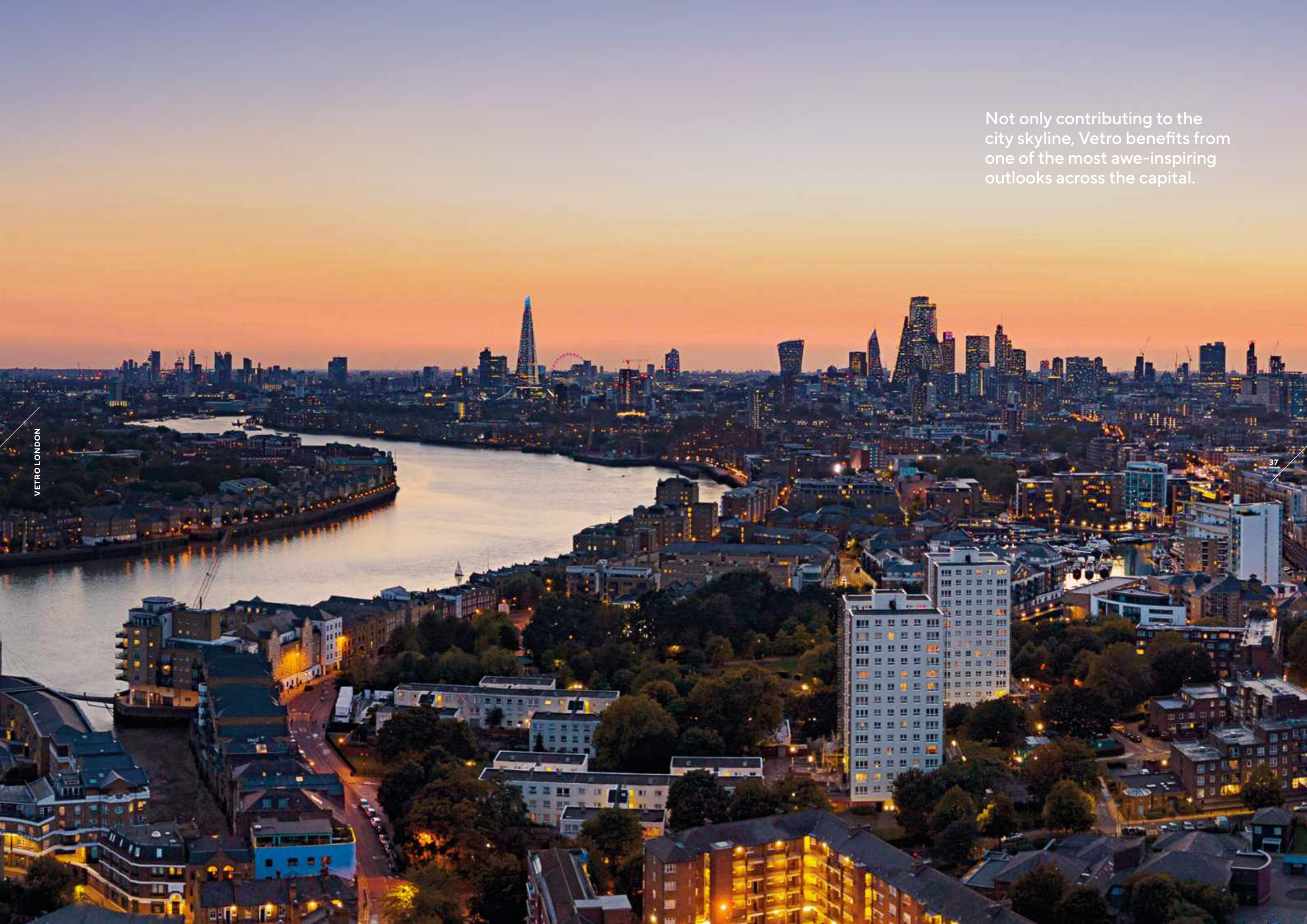
**G** Lobby & Concierge

**24 – 29**  
24, 26, 28.01,  
24, 26, 28.02  
2 Bed Penthouses



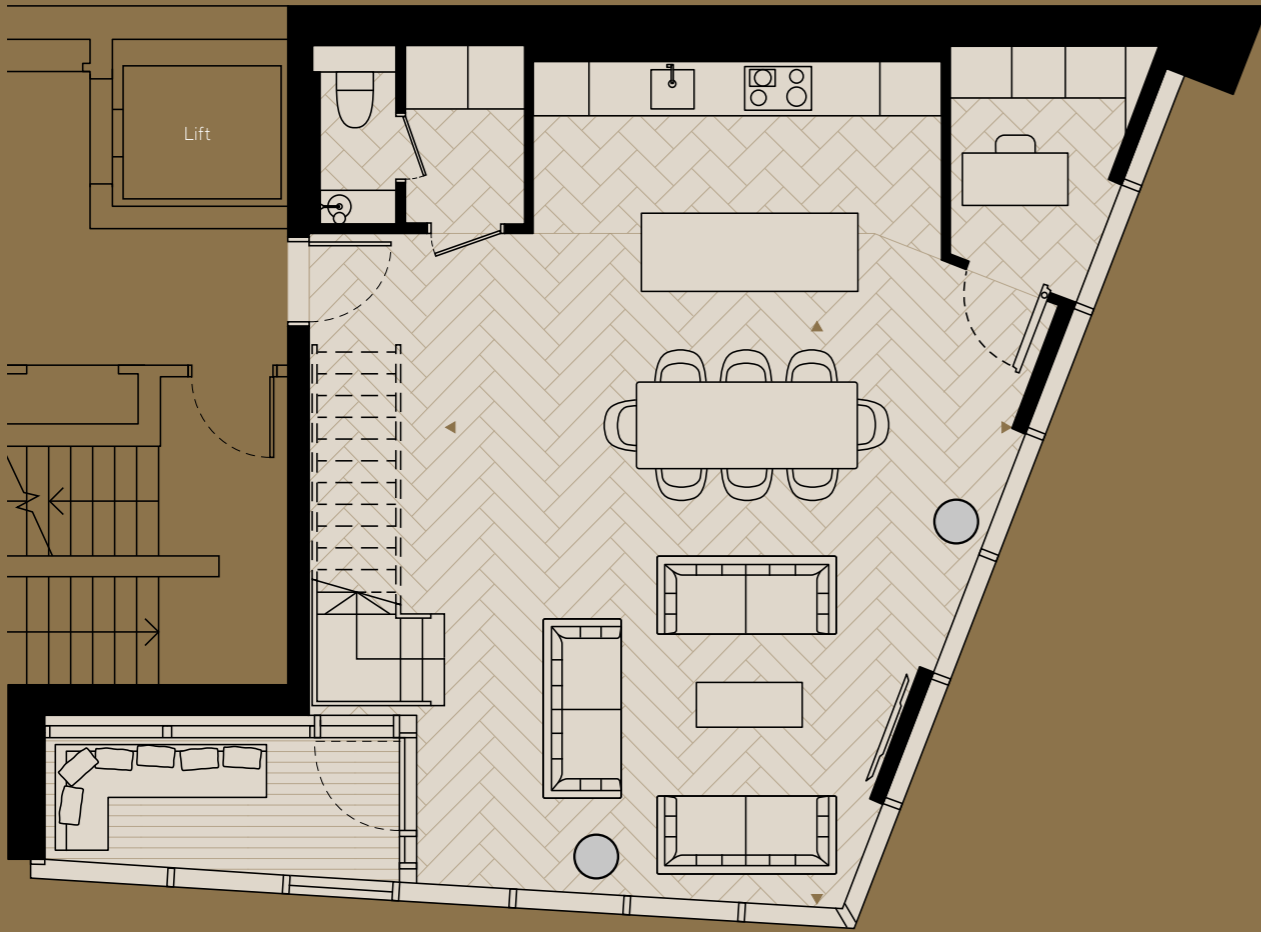


Not only contributing to the city skyline, Vetro benefits from one of the most awe-inspiring outlooks across the capital.





LOWER LEVEL



UPPER LEVEL



# Type 01

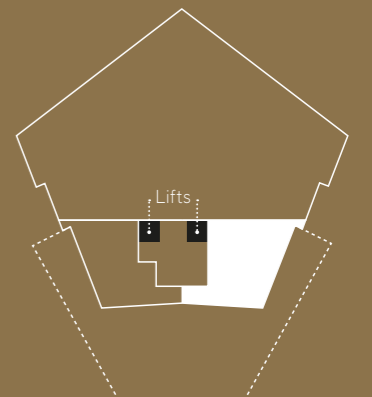


**24,26,28.01** (Lower Level)

**Total Internal Area** 148 sq m / 1586 sq ft  
 Living & Dining 6666 x 6502 mm  
 Balcony 1 6 sq m / 66 sq ft

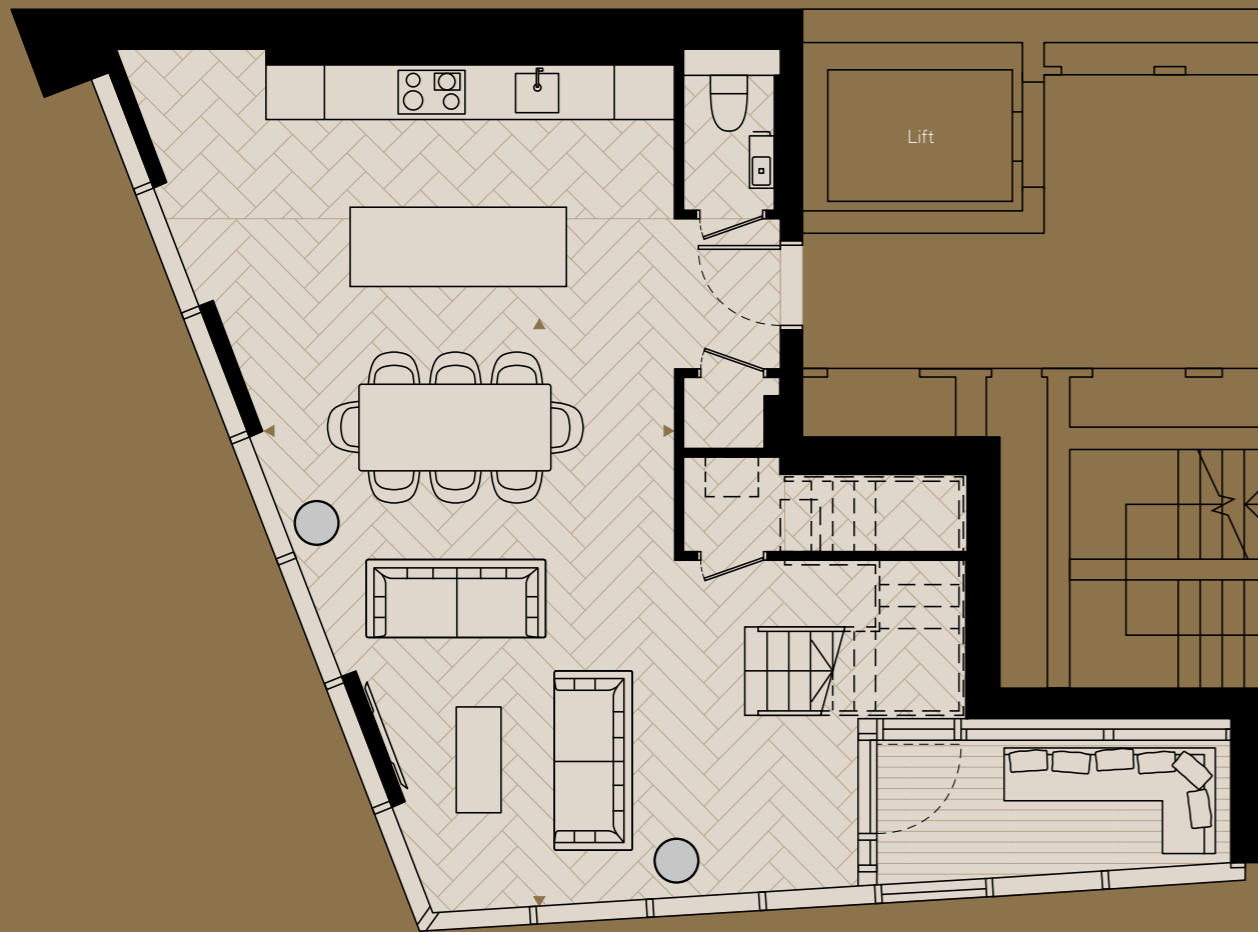
**25,27,29.01** (Upper Level)

Bedroom 1 6167 x 5920 mm  
 Bedroom 2 3027 x 6736 mm  
 Balcony 2 6 sq m / 66 sq ft

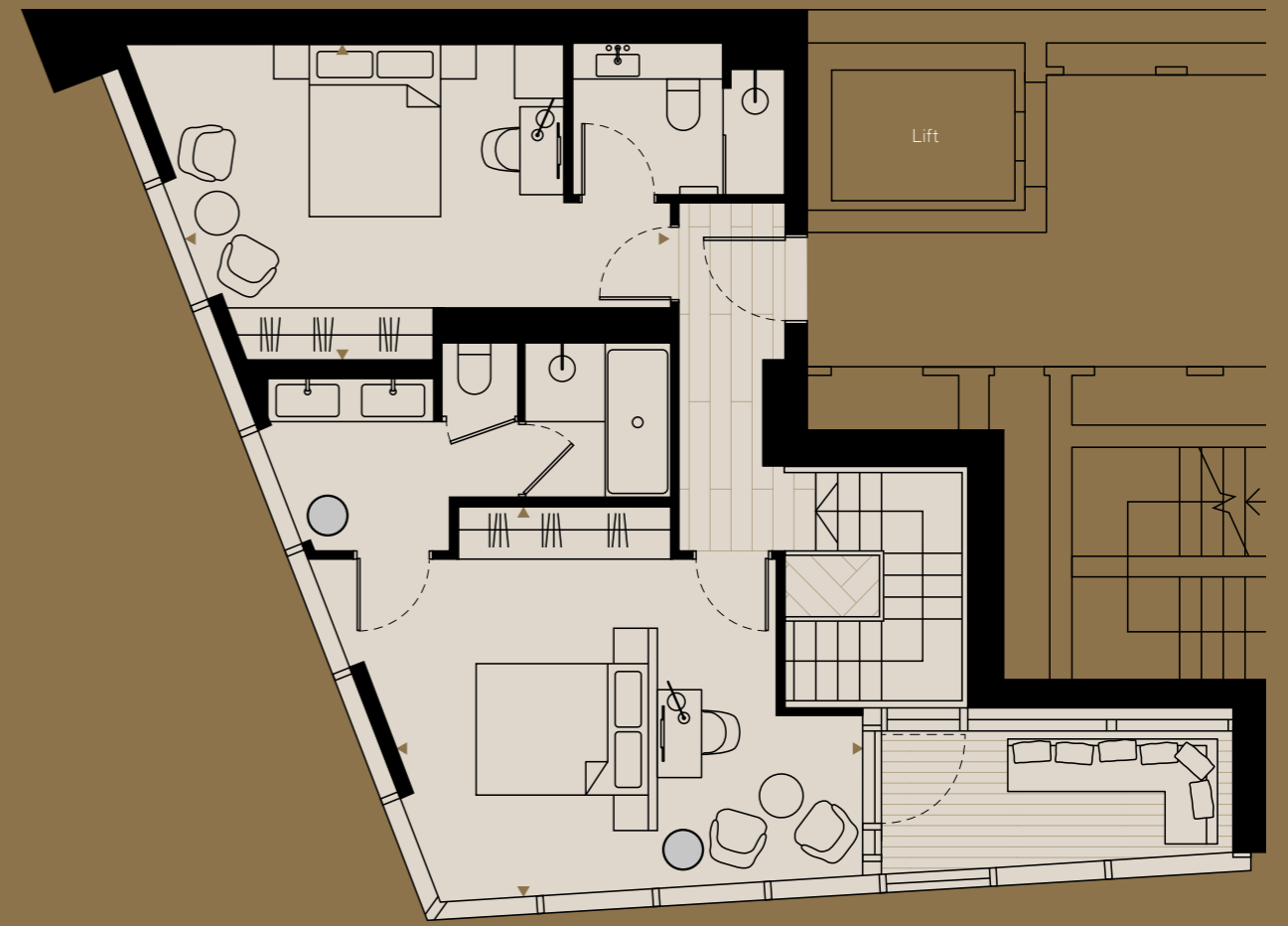




LOWER LEVEL



UPPER LEVEL



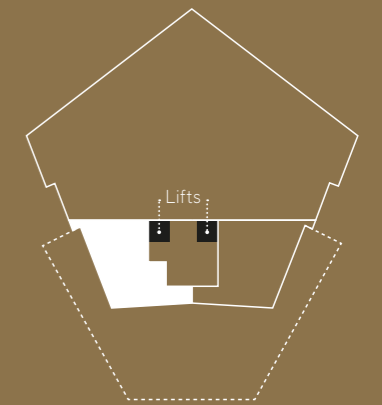
Type 02

**24,26,28.02** (Lower Level)

**Total Internal Area** 128 sq m / 1370 sq ft  
 Living & Dining 6626 x 4679 mm  
 Balcony 1 6 sq m / 66 sq ft

**25,27,29.02** (Upper Level)

Bedroom 1 4446 x 5388 mm  
 Bedroom 2 3627 x 5566 mm  
 Balcony 2 6 sq m / 66 sq ft







On the edge of the glamorous business district, the impressive views over Canary Wharf will impress the most discerning of city dwellers.



Beautiful homes where clever design combines with a sophisticated palette.

## Specification

### ENTRANCE LOBBY

- Bespoke concierge desk to entrance lobby
- Bespoke designed joinery unit with integrated residents' mailboxes and feature-lighting
- Porcelain stoneware-tiled floor
- Oak and Ash timber slat feature wall over dark felt
- White and fumed timber-effect wall-grooved feature panelling
- Perforated metal ceiling with integrated lighting
- Decorative voile sheer drapes

### RESIDENTIAL LOBBIES

- Woven vinyl flooring to residential corridors
- Feature wall/riser door panelling with integrated floor-numbering graphics
- Painted walls and flush handleless riser doors in dark marine and bronze tones
- Painted walls on upper apartment levels
- Feature lighting to apartment entrance doors
- Painted timber apartment entrance doors, deep reveals and architraves
- Satin nickel T-bar hex faceted lever handles with rectangular rosette and complimentary ironmongery
- Perforated metal ceiling with concealed lighting

### AMENITIES

- Resident spa facility with gym, sauna, shower, relaxation space and WC
- Feature timber-effect wall-panelling to residents' gym
- Decorative voile sheer drapes to floor to ceiling glazing in residents' amenities
- Woven vinyl flooring to residents' gym

- Perforated metal ceiling with integrated-lighting to residents' amenities
- Floor to ceiling mirrors with integrated TV to residents' gym
- Timber painted doors and architraves to residents' amenities
- Porcelain stoneware-tiled floor to sauna, shower, relaxation space and WC
- Timber panelling feature wall in relaxation space to match sauna wall cladding
- Porcelain stoneware-tiled wall to shower and WC
- Metallic glaze porcelain wall mosaic feature to shower and WC

### HEATING AND COOLING

- Low pressure heating via wall-mounted radiators
- Comfort cooling via Mechanical Ventilation Heat Recovery (MVHR) units

### LIGHTING AND ELECTRICAL FITTINGS

- Ceiling mounted low voltage fitting throughout

### TELECOMMUNICATIONS, AV AND IT

- Wired for WIFI and Cable TV

### SECURITY AND MANAGEMENT

- Day concierge service
- Comprehensive CCTV covering all common areas including the bike storage
- Fob access for the lifts

### KITCHENS

- Island worktop, side and front in white and ochre-veined gloss black marble finish with mitred-edges to worktop and side corners \*
- Worktops and splashback made of expressed grey-veined gloss white marble finish with mitred-edges to worktop \*
- Bespoke-designed fitted-kitchens with inset-veneered panel in narrow-frame solid-wood Shaker feature, and j-pull handles to all cabinet doors and drawers with wood grain expressed through coffee brown paint finish \*
- Under-counter stainless-steel sink with single lever pull-down tap set in platinum matt-finish
- Internal cupboards with soft-closing drawers and concealed refuse and recycling storage
- Full height larder cupboard
- Concealed LED strip-lighting underneath wall-mounted cupboards
- Miele or similar integrated stainless-steel oven
- Miele or similar integrated combination microwave oven where applicable
- Miele or similar touch-control induction hob
- Cooker hood
- Miele or similar fully-integrated multifunction dishwasher
- Miele or similar free-standing washer/dryer

\* Contemporary kitchen option:

- Designer island-unit featuring support structure allowing under-hung veneer-faced cupboards to be suspended, such that floor finishes can flow below, creating visual continuity

- Designer kitchen featuring handleless cupboard doors and product-specific drawer and carcass design
- Worktops and splashback made of expressed grey-veined gloss white marble finish with mitred-edges to worktop to product-specific minimalist design interface with kitchen units and lighting
- Full-height black oak bi-fold veneered doors that slide out of, or fold into, the side compartments with a light and fluid movement operated with brushed metal handles. This unique function allows parts of the kitchen within the back-wall unit to be concealed and revealed as required

### DOORS

- Painted standard-height entrance doors with painted hardwood frames
- Painted standard-height doors with grooved architrave and skirting
- Satin nickel T-bar hex faceted lever handles with rectangular rosette and complimentary ironmongery

### FLOOR

- Oak flooring with matt-lacquered finish laid in herringbone arrangement with plank border in dining and living room
- Oak flooring with matt-lacquered finish to stairs and in plank arrangement on landings
- Broadloom wool carpets to bedrooms



Timeless style and opulent materials combine for exquisite interiors with hints of harbour legacy.

## Specification

### WARDROBE

- Full-height wardrobes with white-glazed feature beaded timber panelling and mod hex door knob in satin nickel

### CEILINGS

- Plasterboard ceiling finished in white matt paint

### WALLS

- Walls finished in white matt paint (where other finishes are not applied)
- MDF skirting grooved and painted to match architraves

### MASTER BATHROOM

- Enamelled steel bath with deck-mounted mixer-taps, spout, hand-shower and controls with dark platinum matt-finish
- Book-matched expressed grey-veined gloss white marble finish, in full-height large-scale format to bath surround
- Expressed grey-veined gloss white marble finish, to bath edge cover, bath side panel
- Expressed grey-veined gloss white marble finish, in full-height large-scale format to all walls except within WC enclosure and walk in shower
- Large-format white and ochre-veined gloss black marble finish, panels to walk-in shower and WC enclosures
- White and ochre-veined gloss black porcelain, stoneware, mosaic tiles to shower and WC feature side wall
- Enamelled steel shower tray

- Rain head and vertical massage shower, with separate hand-shower and controls
- WC enclosure with black framed glass screen
- Wall-hung shower-toilet WC pan on white and ochre-veined gloss black marble finish, wall-panelling set within slim stainless-steel metal frames with shadow-gaps all around, and fixed onto concealed hinges to allow for access to service void
- Wall-mounted toilet-roll holder, toilet brush and door-mounted robe hooks with dark platinum matt finish
- Black framed glass door to shower and WC
- Black wall-mounted heated towel-rail
- Twin feature bathroom cabinets with mirrored front wall-mounted over vanity unit
- Dark grey-veined textured porcelain floor tiles to bathrooms with matt porcelain skirting in matching colour range

### SHOWER ROOM

- Black frame and handle to glass shower enclosure, enamelled steel shower tray and wall-mounted fixed rain-shower head with separate hand-shower and controls with dark platinum matt finish
- Feature bathroom cabinet with mirrored front and wall-mounted feature-lighting
- Black wall-mounted heated towel-rail
- Walls finished with large-format expressed grey-veined gloss white marble finish panels
- Large-format white and ochre-veined gloss black marble finish panels to shower enclosure
- Feature white and ochre-veined gloss black porcelain stoneware mosaic tiles to shower side wall

- Bespoke vanity unit with expressed white and ochre-veined black marble finish panelling, under-counter enamelled-steel wash hand-basin, deck-mounted mixer-taps with dark platinum matt-finish, integrated shaver socket and wall-hung shower-toilet WC pan
- Wall-mounted toilet-roll holder, toilet brush and door-mounted robe hooks with dark platinum matt-finish
- Dark grey-veined matt porcelain floor tiles to bathrooms

### GUEST WC

- Feature bathroom cabinet with mirrored front and wall-mounted feature lighting
- Vanity unit with white and ochre-veined gloss black marble finish, faced panelling, enamelled steel under-counter wash hand-basin, wall-mounted mixer-tap with dark platinum matt-finish
- Large-format white and ochre-veined gloss black marble finish panels to full-height vanity-unit, side- and back-splash walls
- Wall-hung shower-toilet WC pan on large-scale format expressed grey-veined gloss white marble finish, panelling set within slim stainless-steel metal frames with shadow-gaps all around and fixed onto concealed hinges to allow for access to service void
- Marine grey-painted walls between side panels to vanity unit and WC back wall
- Dark marine grey painted door and architrave
- Wall-mounted toilet-roll holder, toilet brush and robe hooks with dark platinum matt-finish
- Dark grey-veined grey matt porcelain floor tiles and matching skirting

- Full-height black oak veneered doors to washing machine cupboard

### INTERNAL STAIR

- Timber and metal feature staircase

### WINTERGARDEN

- Ceramic tile/decking floor finish

### UTILITY CUPBOARD

- Cooling and heating interface units
- Mechanical Ventilation Heat Recovery (MVHR) unit
- Consumer unit storage
- Washing machine and dryer



A VIBRANT AND EVER  
CHANGING DISTRICT







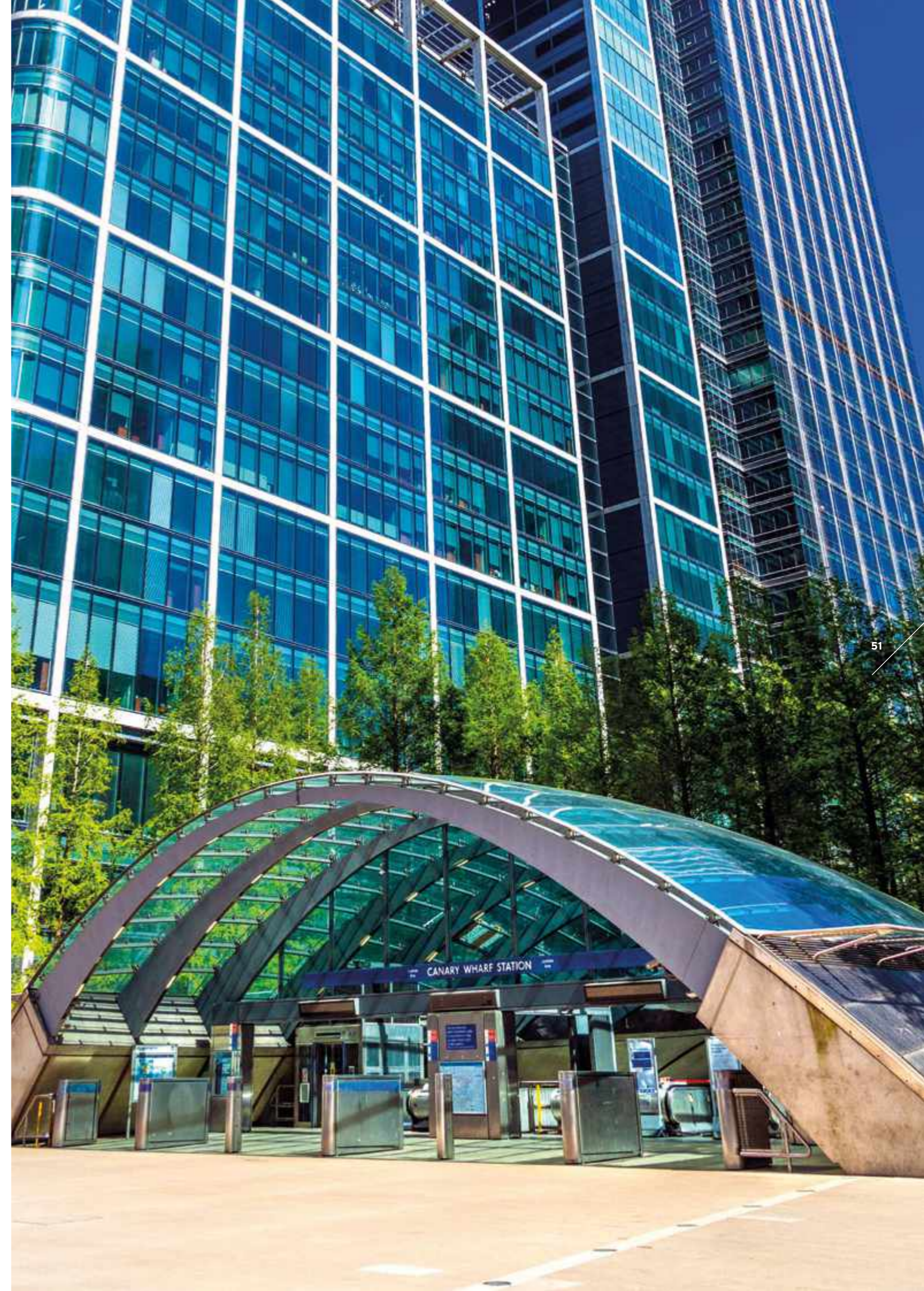
**CANARY WHARF  
UNDERGROUND STATION**

The Jubilee Line connects to Westminster in 11 minutes and Bond Street in 15 minutes.

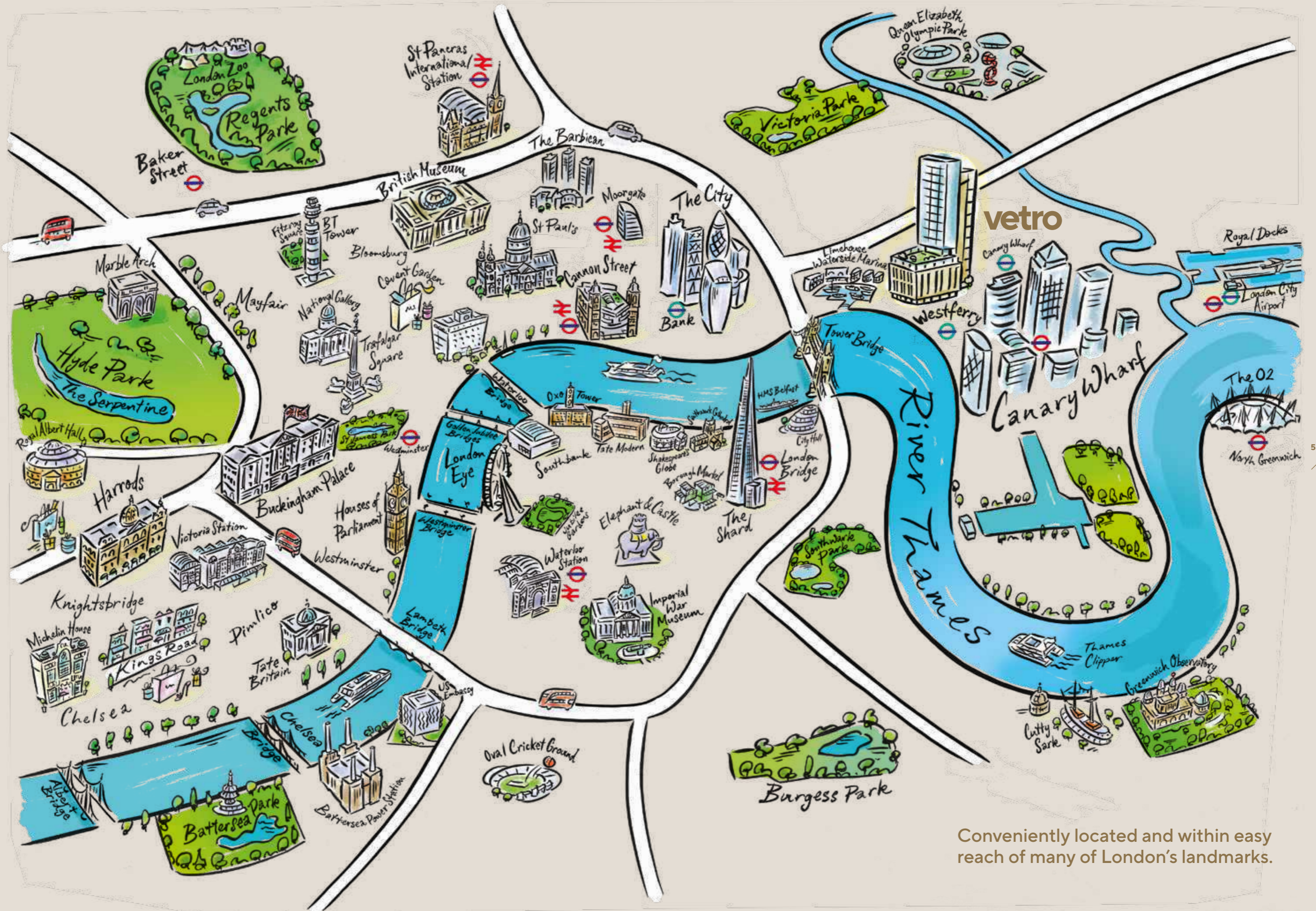
**Vetro enjoys a wealth of travel options, with multiple train lines, cycle routes and the riverboat service.**

With its own virtually dedicated DLR station just yards from its door, Vetro is only two minutes away from Canary Wharf by train or a three-minute cycle. Canary Wharf provides access to the new Elizabeth Line with its rapid connections across London to Heathrow, alongside the Canary Wharf Underground station and the Jubilee Line.

The Thames Clipper pier is also a short walk away and links via the Thames to Bankside, the Tower of London, Westminster and Battersea Power Station amongst others.







Conveniently located and within easy reach of many of London's landmarks.





**Vetro is mere minutes from London's iconic hub of trade and finance, along with its extensive shopping, cafés and restaurants.**

Within just a ten-minute walk or just three minutes by bike, you will be among the splendour, events, parks and excitements of this extraordinary neighbourhood. Affording a quick transition from enjoying the views over the impressive Canary Wharf skyline to being a part of the vibrant bustle of what's happening on the ground, Vetro is perfectly positioned to deliver all the rich and diverse experiences of truly rewarding urban-living.





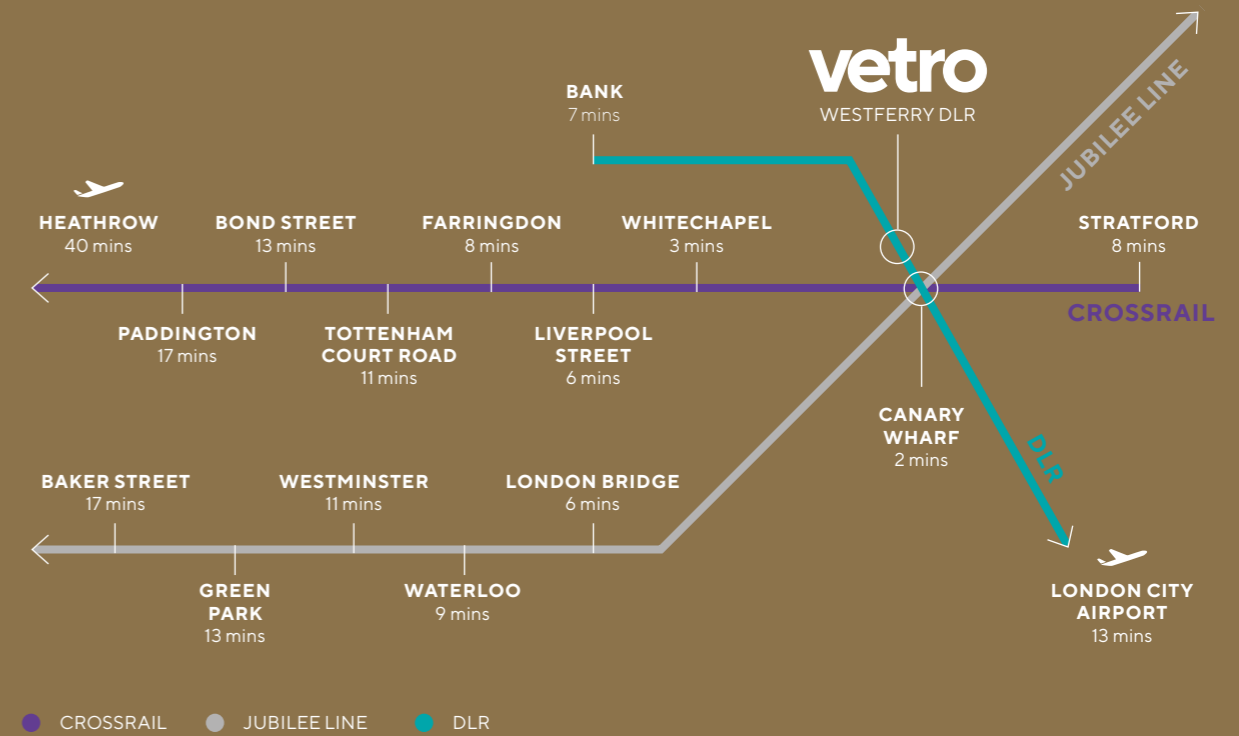
CANARY WHARF STATION



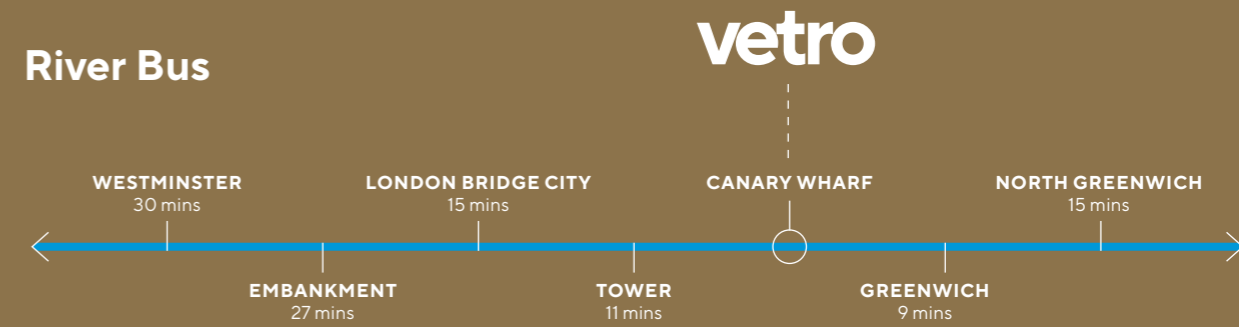
CROSSRAIL PLACE

**2 minutes to Canary Wharf and 7 minutes to The City with Westferry DLR station on your doorstep.**

**QUICK CONNECTIONS**  
Canary Wharf underground and Bank stations are easily reachable on the Docklands Light Railway line.



BANK DLR STATION



All travel times starting from Westferry DLR station. Source: Transport for London



## Some of the world's finest universities and colleges within easy reach.

Due to its proximity to the DLR, Elizabeth and Jubilee line stations, Vetro is hyper-connected to the Capital and all that it has to offer, including the impressive portfolio of world-class universities, schools and colleges, from London University and Imperial College to Central Saint Martins and Goldsmiths.

**RADA**  
28 mins

**CENTRAL SAINT MARTINS**  
30 mins

**UNIVERSITY COLLEGE LONDON**  
25 mins

**QUEEN MARY UNIVERSITY**  
11 mins

**vetro**

WESTFERRY DLR

**LONDON SCHOOL OF ECONOMICS & POLITICS**  
23 mins

**UNIVERSITY OF EAST LONDON**  
21 mins

**UNIVERSITY OF GREENWICH**  
15 mins

**RAVENSBORNE UNIVERSITY**  
17 mins

**KING'S COLLEGE**  
21 mins

**LONDON SOUTH BANK UNIVERSITY**  
24 mins

**GOLDSMITHS UNIVERSITY OF LONDON**  
25 mins

**IMPERIAL COLLEGE**  
37 mins

All travel times starting from Westferry DLR station.  
Source: Google maps.



**QUEEN MARY UNIVERSITY**  
11 mins

A leading research-intensive university with a uniquely diverse student body.

Medicine  
Dentistry  
Engineering  
Linguistics



**KING'S COLLEGE**  
21 mins

A prestigious university based in the heart of The City.

Humanities  
Law  
Sciences  
Economics & Business



**UNIVERSITY COLLEGE LONDON**  
25 mins

London's top ranked university for academic excellence.

Education  
Architecture  
Medicine & Pharmacy  
Art & Humanities



**CENTRAL SAINT MARTINS - UNIVERSITY OF THE ARTS LONDON**  
30 mins

The world's most famous art college.

Fashion Design  
Architecture  
Product & Industrial Design  
Graphic Communication





**NEIGHBOURING CANARY WHARF ELIZABETH LINE STATION (CROSSRAIL)**  
offering access to the newly opened Elizabeth Line, which can effortlessly transport you to Bond Street in just 13 minutes.





**JUBILEE PARK**  
Brings instant serenity with a tree-filled open space with cascading water features and art installations.



Canary Wharf might be best known as London's business district but it is also home to one of the biggest collections of public art in the UK. Among the high-rises, foyers, parks and courtyards, there are over 70 examples of exquisite standalone pieces and integrated artist architectural works to explore. Transforming the area with colour, light and extraordinary form, together they represent an award-winning urban exhibition of highly respected global talent. Marvel at Henry Moore's historic Draped Seated Woman and take the time to appreciate more contemporary and ambitious projects such as the bronze Fortuna in Jubilee Park. When you follow the Canary Wharf art trail, there are new and unexpected discoveries at every turn.





The art is  
a constant  
source  
of surprise  
and joy.

VETRO LONDON



A stone's throw from Vetro, Canary Wharf's open spaces are filled with unexpected and intriguing artworks from all over the globe.





The choice of a multitude of bars and restaurants, shopping and cafés.

**BAR & RESTAURANTS**  
Whatever your taste, there is no shortage in choice when it comes to drinking and dining at Canary Wharf.





66

Home to one of London's largest and most exciting shopping centres.

VETRO LONDON

67





STREET



**CROSSRAIL PLACE**  
Rising from the North Dock, stands this beautifully designed complex, home to both Canary Wharf Station and an exquisite roof-top garden.

**JUBILEE PLACE**  
Is one of Canary Wharf's four shopping malls, with shops, cafés and restaurants.

**Discover Montblanc, Coach, Jo Malone, Paul Smith, Ralph Lauren and many more impressive brands.**







**Culture has truly uplifted the community at Canary Wharf, from its public art to a packed calendar of exciting events throughout the seasons.**

**EVENTS AT CANARY WHARF**

Year-round entertainment at Canary Wharf such as the London Mural Festival, Winter Lights show, ice skating and many more ensures there is never a dull day to be had.







VETRO LONDON

A hidden gem in the capital, Narrow Street serves up the original Thames-side experience.

**RIVERSIDE WALKS**

From Canary Wharf to Narrow Street, the picturesque walks along the River Thames are dotted with restaurants and pubs.



A short stroll from Vetro is a place of time-worn charm. Narrow Street is the oldest part of Limehouse and a true attraction for those looking for that authentic experience in

the capital. Dotted among the rare 18th-century brick terraces, impossibly old taverns and newer gastropubs line the edge of the Thames, jostling with the custom that this area has always enjoyed. The street's most precious occupant is The Grapes, a 1720 pub of pint-sized proportions that Charles Dickens and Samuel Pepys would famously frequent. From The Prospect of Whitby, closer to St Katharine Docks, to Gordon Ramsay's The Narrow just ten-minute walk from Vetro, you can savour traditional dishes topped with river views and a helping of London's rich history.





**THE PROSPECT OF WHITBY**

Enjoy a drink on a glorious summer's day at London's oldest riverside pubs dating back to 1520.



# A rich history of trade and discovery.



# A

Although there are now few signs of its past, the area surrounding Vetro was London's original Chinatown. In the late 19th Century, Chinese employees of the

East India Company settled on the edge of the world's busiest docks and set up businesses to cater for their home sailors who travelled across the seas to trade silks, teas and spices. By 1910, a thriving community had formed around a collection of cafés, restaurants, laundrettes, shops and lodges creating the first Chinese quarter in the capital. Today, traces have all but disappeared but there is romance in the notion that these streets once echoed the sounds of spice traders from the ancient Orient – a secret heritage that instils great wonder and surprise.

**Where spices and timbers, silks, rhubarb and teas arrived from an imperial land.**







# simpsonhaugh

**A passion for responsible, uplifting and beautiful design from concept to delivery since 1987.**

Established in 1987, SimpsonHaugh is an award-winning architectural practice built from a passion for responsible, uplifting and beautiful design. Its initiation was motivated by the shared belief of Ian Simpson and Rachel Haugh that innovative architectural thought has the power to shape and transform cities through mindful regeneration and the creation of new contemporary identities.

Reinforcing these guiding principles across a portfolio of work, ranging from masterplans to interiors, SimpsonHaugh applies a creative and bespoke approach to every opportunity. Collaborating with aspirational clients, communities and design teams, they harness the commitment, knowledge and expertise to evolve influential and pragmatic solutions. With their talented architects, designers, visualisers, model makers and support team all contributing to delivering architecture of the highest quality, SimpsonHaugh is truly founded on a collaborative spirit and strong design integrity.



**Meticulously delivering architecture of the highest design quality.**

**DOLLAR BAY**  
A striking addition to the Canary Wharf skyline.

**BATTERSEA POWER STATION**  
Circus West Village, a mixed-use development, delivered as part of first phase.

**ONE BLACKFRIARS**  
Distinctive mixed-use residential tower on London's South Bank.

**QUEEN ELISABETH HALL**  
A landmark concert hall in Antwerp, Belgium.





# Rockwell

**From concept to delivery,  
creating opportunities,  
sharing values.**

Rockwell Property is a property developer with an aspiration for excellence. Committed to delivering quality, contemporary and sustainable architecture that will put places on the map and build thriving neighbourhoods, it is a company underpinned by robust values and tailored approaches. There is no common formula to their work – each and every project responds to and reflects its location, with design and usage customised on a site-by-site basis.

Rockwell is a true believer in London, both as a unique opportunity for development and due to its status as a cultural melting pot on the world stage. This confidence in the capital has underpinned Rockwell's involvement with a variety of development projects worth over £2 billion such as Quay House in Canary Wharf, Kensington Forum, Westferry, 101 Newington Causeway Elephant and Castle, and a plethora of other projects in the pipeline.

Rockwell is also about relationships consolidated over time. It works closely with world-renowned architects and urban designers who share the company's ethos and passion for transformative development. The creation of extraordinary buildings and places that enhance communities is at the very heart of Rockwell's vision, with the company striving to leave a development legacy that stands the test of time.



## **ONE SOUTH QUAY**

Mixed-use scheme combining artistry with accessibility in the Isle of Dogs.

## **KENSINGTON**

Redevelopment of existing Holiday Inn in Kensington, London.

**DONAL MULRYAN**  
Founder of Rockwell



Founded by Donal Mulryan, Rockwell is testament to this highly successful and trusted property professional with over 30 years' experience in the UK development and construction industry. In 1993, Donal became a Founding Director of

Ballymore Properties UK. He is a brother of Sean Mulryan, the owner of Ballymore Properties. To date he has conceived and delivered over £8 billion worth of various award-winning schemes across the UK and has worked in Joint Venture Partnership with Morgan Stanley and other large international institutions. Donal has poured his expertise into Rockwell and, alongside an in-house talented team working in conjunction with renowned architects, he continues to deliver cutting-edge developments, designed and executed to his exacting standards.



A DEVELOPMENT BY

---

# Rockwell

SALES

---

**JOHNS&CO**  
· L O N D O N ·

vetro@johnsand.co  
020 3871 5890  
70 Marsh Wall,  
Canary Wharf, E14 9SL



INTERNATIONAL

info@L2international.com  
020 3105 2166  
35 New Broad Street,  
London EC2M 1NH

Rockwell, whose registered office is at 11-12 St James's Square, London SW1Y 4LB, is appointed development manager of Vetro by the owner West India Property Investments Limited. Rockwell reserves the right to amend any of the specifications at any time at its absolute discretion as necessary and without any notice. Rockwell assumes no responsibility and shall not be liable to any person for any loss, damage or expense caused by reliance on the information in this brochure. Whilst reasonable efforts have been made to ensure that the information in this brochure is correct, it is designed specifically as a broad indicative guide only and accuracy cannot be guaranteed and no representation or warranty is made in that regard. This brochure and the information contained in it does not in any way constitute or form any part of a contract for sale, transfer or lease nor does it constitute a representation or otherwise form the basis of a contract. Photos, computer-generated images (CGIs), drawings and perspectives contained in this brochure may not relate to the development, are indicative only. Local maps and Artist illustrations of the site are not to scale, landscaping, gradients and street furniture may differ to what is shown and should not be relied upon as depicting the final as built development or apartment. All sales remain subject to contract. Designs and layouts of the development and apartments are indicative only and may change. The specification of the apartments is the anticipated specification at the date this brochure was prepared, but may be subject to change. Dimensions shown are approximate sizes only and actual sizes may be different once constructed. Contract specifications and dimensions may also be changed in accordance with permitted variances under the apartment sale contracts, although it is not anticipated that overall apartment sizes will vary by more than 5%. Furniture, wall coverings, floor coverings, feature lighting and other fixtures shown in the CGIs and photographs are not included in sales and may differ. Vetro is a marketing name only and will not necessarily form part of the approved postal address. All information regarding prospective non-residential occupiers represents current intention only and the final identity and/or nature of the occupiers may change. The facilities and services may not be available at the date of completion. Neither the agents nor any person in their employ has any authority to make or give any representation, warranty or guarantee (whether written or oral) in respect of or in relation to the development (or any parts of it). Prospective purchasers should satisfy themselves regarding the accuracy of the information provided in this brochure. No assumption should be made regarding any part or the whole of any plot or the estate not shown in the brochure and we recommend prospective purchasers visit and inspect the development site to understand its relationship to the surrounding area. November 2020.



